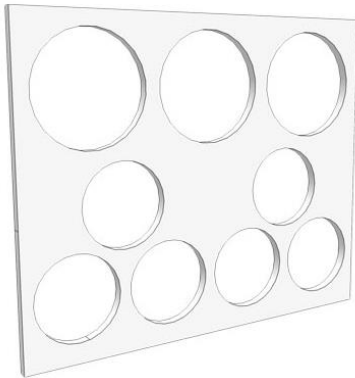


Product Specification – Baffle Spacer / Bore Spacer – 2019



Baffle Spacer



Bore Spacer

Product Description and Use

The Spacer Company Baffle and Bore Spacers play a vital role in ensuring conduit of various size and configuration can be laid within a Conduit Trench or Trenchless Bore to meet the required specification. Each Spacer is custom designed and will provide the temporary support required until backfill is placed.

Features

- Manufactured in lightweight Celluka (Foamed PVC)**
- Simple installation
- Suits all Conduit Sizes
- Customised to each application

** Super tough option of PP / HDPE sheet also available



Material

Celluka

Most Baffles and Bore Spacers are produced using our Economical Celluka. Celluka is lightweight and easy to cut providing a cost-effective solution to most projects.

Spacer Company Baffle / Bore Spacers are manufactured in Australia using 15mm thick White Lightweight PVC (Celluka)

PP / HDPE Sheet

Whilst the Celluka product is flexible and lightweight there are occasions where additional toughness is required. Bore Spacers and Baffle Spacers manufactured in PP/HDPE sheet are a premium priced product which offer the ultimate in toughness for a wide variety of designs.

The following examples are instances where PP/HDPE Sheet should be considered.

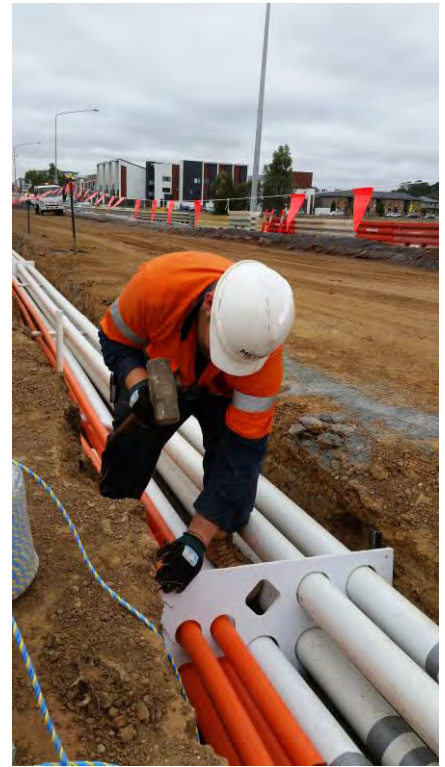
- Bore Spacers are 800mm or larger in diameter
- Baffle Spacer layouts have multiple large conduits which weaken the structure of a Celluka based product.

Baffle Spacers

The Baffle Spacer is a 'made to measure' solution to suit non-standard applications. By providing us with the basic requirements we can produce a dimensioned CAD drawing for approval before cutting.

In applications where a part-fill and compact are required we offer are multi-piece baffle which can be assembled in stages and simply screwed together.

Voids can be added which may assist with the flow of backfill. The addition of voids needs to be carefully considered as voids will weaken the structural integrity of the baffle spacer.



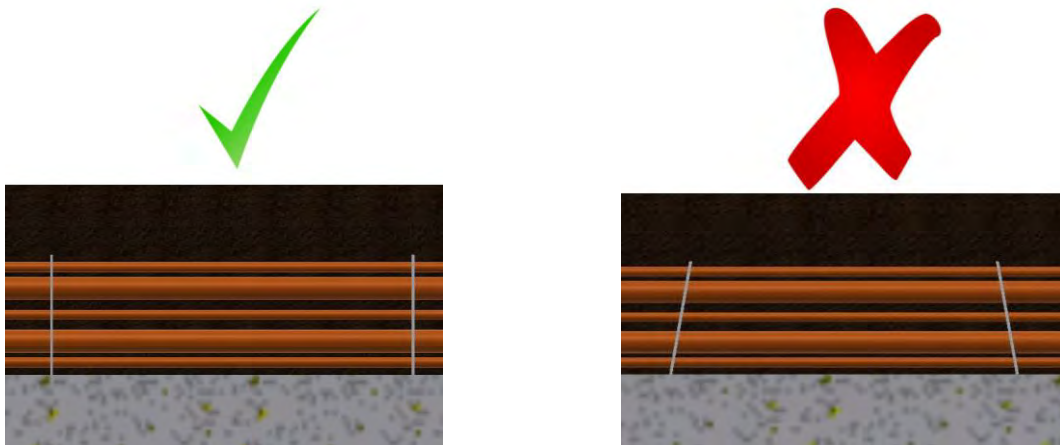
Baffle Installation Tips

- Keep Baffle Vertical
- Ensure clean 90-degree corners in trench
- Backfill each side of baffle to provide support



Whilst the Celluka is a lightweight, tough material - Baffles may snap if they are not treated correctly.

Keeping the baffle vertical is important and becomes vital as the additional load of larger diameter conduits is applied.



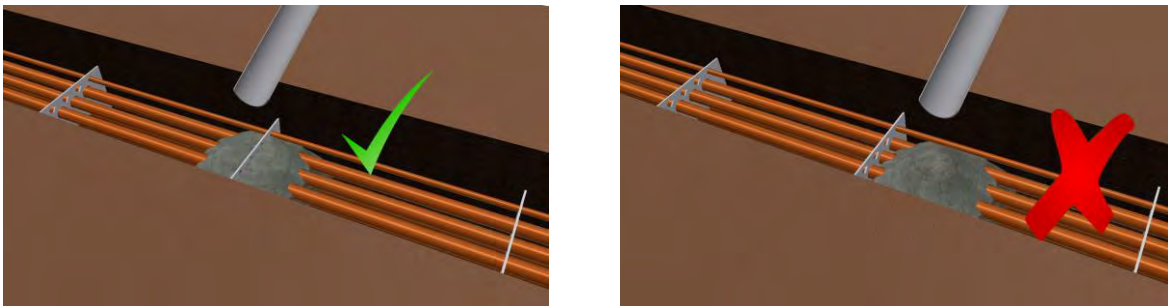
Side view of Conduit Trench

Uneven trench bases will concentrate load on small sections of a baffle resulting in a possible failure. Trench bases need to be flat and have clean 90-degree corners.



End View of Conduit Trench

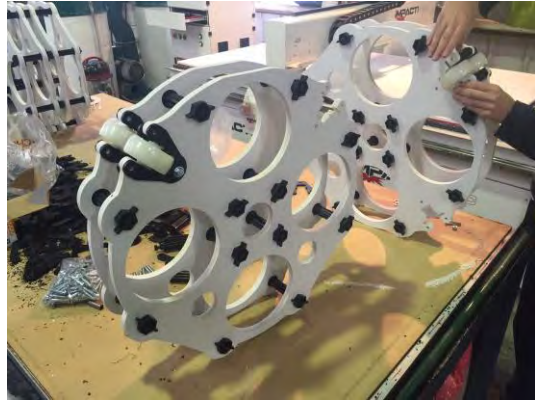
Often a flowable backfill is used to insulate conduits. During the backfill stage care must be taken not to allow the baffle to take the full weight of backfill. Simultaneously backfilling each side of a baffle will help the baffle remain in place and minimise the risk of failure.



Top View of Conduit Trench

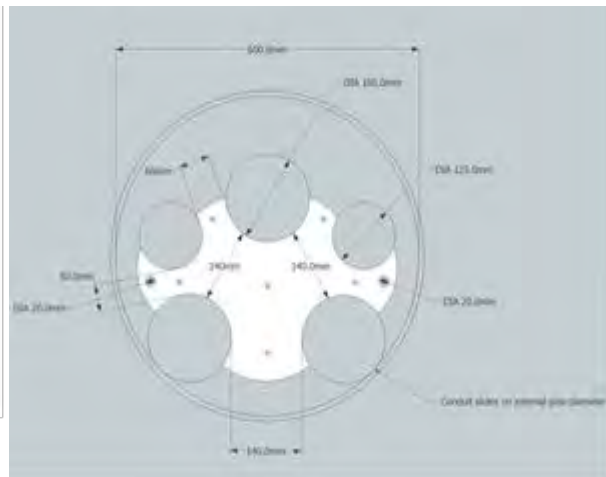
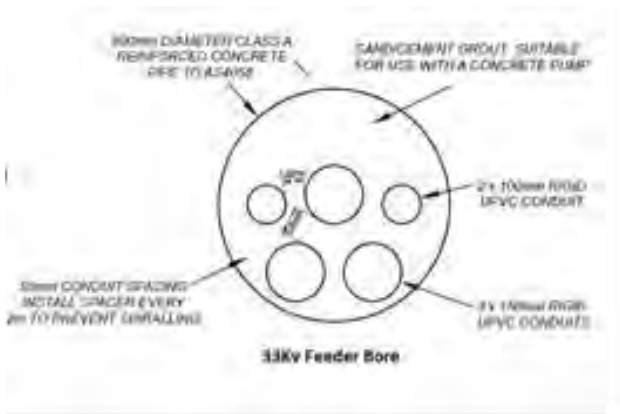
Bore Spacers

The Spacer Company Bore Spacer is used for Trenchless or Conduit-in-Casing applications. Using basic information on the application we provide a dimensioned drawing for sign off and manufacture.



The Bore Spacer can be manufactured with or without Nylon Castor Wheels depending on the application. To assist with stability, it is required that 2 Bore Spacers are bolted together with our Injection Moulded Poly Bolt system.

The design of each Bore Spacer must allow clearance around the Conduit bundle to allow successful lifting and sliding of the bundle from the open end of the Bore.



Product Data for PVC Sheeting (Celluka)

Expanded PVC sheet with pigments and processing additives immobilised in the polymer

PVC	85.51%
CaCO ₃	2.94%
Processing aid	8.55%
Foaming Agent	1%
White color aid	1%
CPE	1%

Celluka PVC foam board's specification:

Thickness: 15mm

Size: 1220*2440mm

Colour: White

Density: 0.55 g/cm³